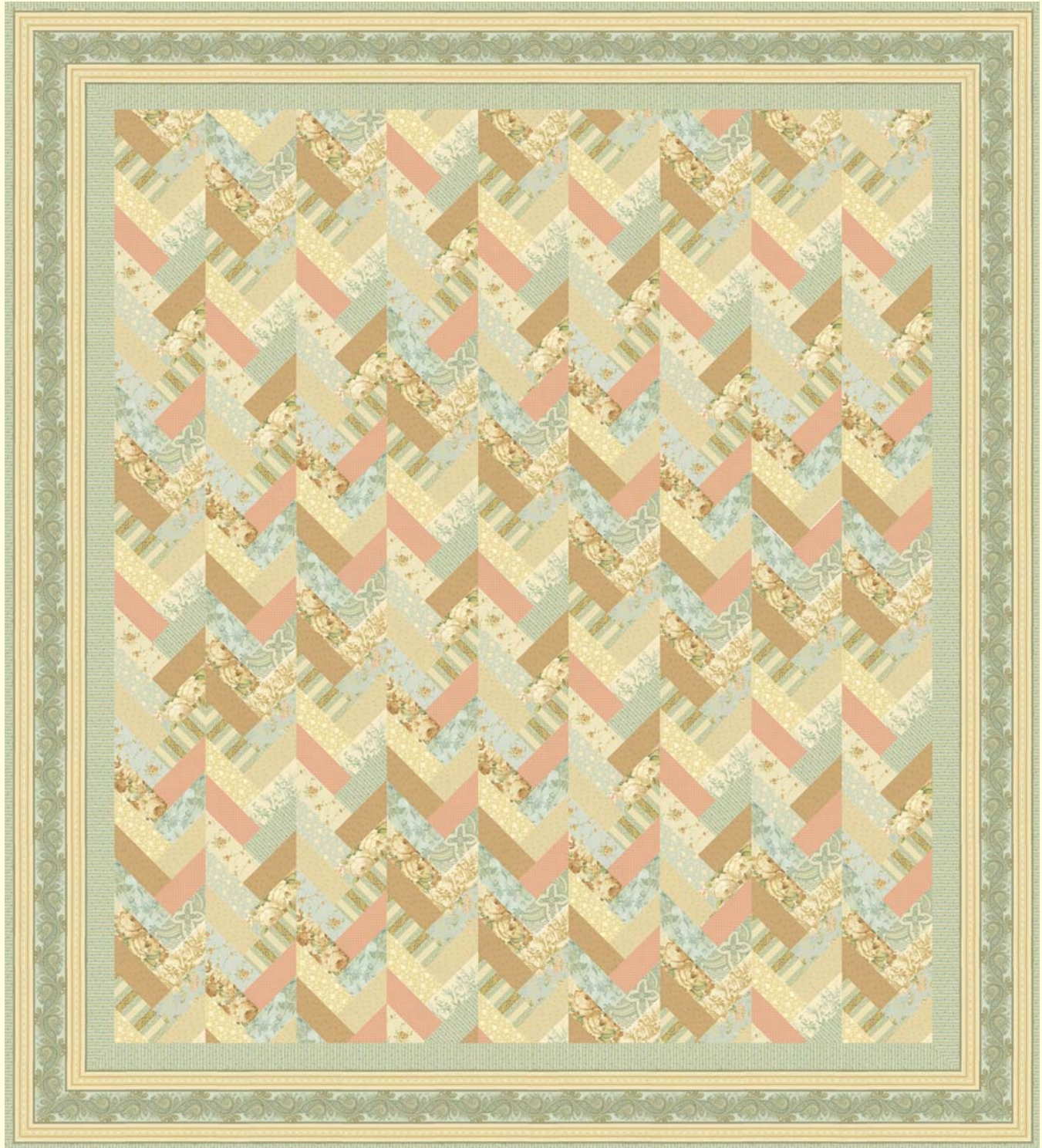


Catillion

Quilt Designed by Jean Ann Wright

Skill Level: Intermediate

Finished Quilt Size: 72" x 90"



Fabric collection
by Faye Burgos

MARCUS
Fabrics®

Marcus Fabrics
980 Ave of the Americas, NY, NY 10018
www.marcusfabrics.com

Catillion

Skill Level: Intermediate **Finished Quilt Size: 72" wide x 90" high**
Strip Count & Size: 9 strips 6" wide x 72" long

Fabric Requirements

Fabric A 2-2/3 yd 1986-0122 stripe

Fabric B 1/3 yd 1987-0122 large rose

Fabric C 1/3 yd 1987-0179 large rose

Fabric D 1/3 yd 1988-0122 aqua toile

Fabric E 1/3 yd 1988-0179 tan toile

Fabric F 1/3 yd 1989-0122 paisley

Fabric G 1/3 yd 1900-0122 small floral

Fabric H 1/3 yd 1990-0179 small floral

Fabric I 1/3 yd 1991-0122 Strip-It

Fabric J 1/3 yd 1992-0122 bird

Fabric K 1/3 yd 1993-0122 tiny floral

Fabric L 1/3 yd 1993-0179 tiny floral

Fabric M 1/3 yd 1994-0179 texture

Fabric N 1/3 yd 1994-0193 texture

Fabric O 1-1/4 yd 1995-0122 stripe

Fabric P 1/3 yd 1996-0179 texture

Backing: 6-1/2 yd fabric D. Cut 2 pieces 2-2/3 yds long and sew together selvedge to selvedge. Trim to 76" x 94" for backing

Binding: 2/3 yd fabric O. Cut (9) 2-1/4" x wof strips and sew together end-to-end.

Cutting

Note: In cutting "wof" indicates width of fabric.

(4) 6-1/2" x length of fabric strips fussy cut with light portion of strips on each outside edge and the aqua stripe in the center.

(4) 2-1/2" x wof strips. Recut into (16) 2-1/2" x 10-1/2" pieces. Separate into (2) stacks of (8) strips each. Measure 4" from top left corner, position your quilter's ruler at a 45° angle slanting from top left to bottom right and slice the strips at this angle. Repeat with the remaining (8) 2-1/2" x 10-1/2" strips reversing the angle from top right to bottom left. Yield: 32 angle cut pieces, 4" along the short side and 6-1/2" along the opposite long side.

Cut same as fabric B

Cut same as fabric B

Cut same as fabric B

Cut same as fabric B

Cut same as fabric B

Cut same as fabric B

Cut same as fabric B

Cut same as fabric B

Cut same as fabric B

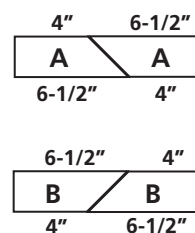
Cut same as fabric B

Cut same as fabric B

Cut same as fabric B

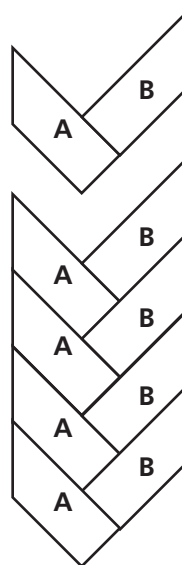
(7) 3-1/2" x wof strips, sew together end-to-end and recut into (2) 80-1/2" vertical borders and (2) 62-1/2" horizontal borders
 (4) strips cut same as fabric B

Cut same as fabric B



Sewing

1. Begin by stacking your cut pieces according to direction of the 45° angle cut. The stack with the slant going from top left to bottom right will be Stack A. The stack with the slant going from top right to bottom left will be Stack B. Take a piece A from the top of the stack and sew it to the bottom of the piece B at the top of the stack as shown in the diagram. Add a piece B, then a piece A as you work your way down the vertical row adding a different print until you have one of each print in the row, repeat until each odd numbered vertical row has 53 pieces from top to bottom. Make 5 odd numbered rows. Repeat the process to sew the rows for the even numbered rows with pieced B on the right side and pieces A on the left side. Make 4 even numbered rows.



Catillion

2. Trim the vertical rows to be 72-1/2" from top to bottom. Trim the top of the strip even with the point where pieces A and B meet. Measure down 72-1/2" and trim the bottom. All strips should be trimmed evenly so the seams of the angled pieces meet when the strips are sewn together.

3. Sew all nine vertical rows together stitching from top to bottom as you add each row.

4. Center and sew the 80-1/2" fabric O borders to opposite sides of the quilt with an equal amount of border fabric overlapping at each end. Center and sew the 62-1/2" fabric O borders to the top and bottom of the quilt with equal amounts of border fabric overlapping at each end. Miter the corners and trim away excess fabric.

5. Center and sew the fabric A borders to each side of the quilt with an equal amount of border fabric overlapping at each end. Miter the corners and trim away excess fabric.

Finishing

6. Layer the quilt top, batting and backing. Baste, then quilt the layers together.

7. Fold the binding strips over lengthwise and press the fold line. Line up raw edges of binding with raw edges of quilt top and sew in place. Turn binding to back of quilt and stitch in place.

