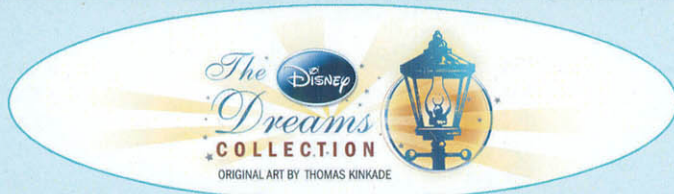


# "Tinker Bell and Peter Pan Fly to Neverland" Quilt

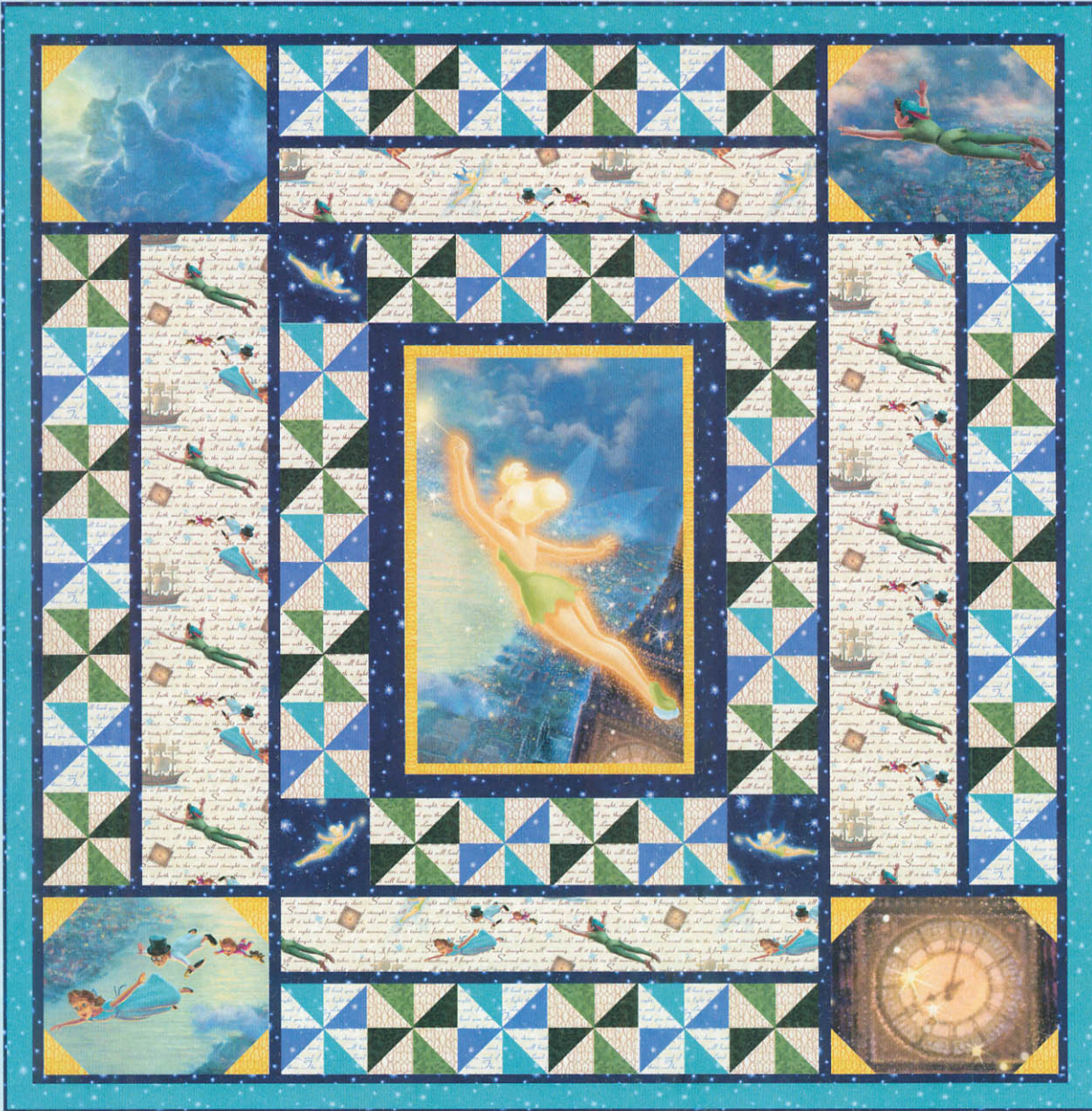


TK-9608-9C-1 - 1 panel



Skill Level: Intermediate

Approximate Size: 49" x 49"



TK-9603-9C-1  
7/8 yard

on this morning... all it takes is fa  
Second star to the right and ste  
hl and something I forgot: dust...  
... all it takes is faith and trust, a  
and straight on till morning... all  
I forgot: dust... Second star to the  
star to the right and straight on to  
th and trust, ah! and something I  
I forgot: dust... Second star to  
on till morning... all it takes is fa

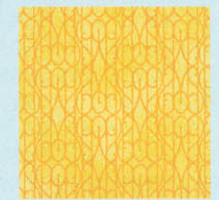
TK-9605-9C-1  
1/4 yard

on this morning... all it takes is fa  
Second star to the right and it  
hl and something I forgot: dust  
... all it takes is faith and trust, a  
and straight on till morning... all  
I forgot: dust... Second star to the  
star to the right and straight on to  
th and trust, ah! and something I  
I forgot: dust... Second star to  
on till morning... all it takes is fa

TK-9605-9C-2  
1/4 yard



TK-9012-9C-9  
1/3 yard



TK-9012-9C-5  
1/4 yard



TK-9607-9C-1  
1/4 yard



TK-9598-9C-3  
1 yard



TK-9598-9C-1  
1/4 yard



TK-9598-9C-4  
5/8 yard



TK-9606-9C-2  
1/4 yard



TK-9606-9C-1  
1/4 yard

3 yards for backing (your choice)

David TEXTILES, INC.  
www.davidtextilesinc.com • Commerce, CA 90040

# "Tinker Bell and Peter Pan Fly to Neverland" Quilt

Quilt approximate size 49" x 49"

All border strip length measurements are approximate. Please measure your quilt top before cutting the length of each border.

## Fabric Requirements

Fabric A: Peter Pan Panel	1 panel of TK-9608-9C-1
Fabric B: Green Leaves	1/4 yard of TK-9606-9C-1
Fabric C: Dark Green Leaves	1/4 yard of TK-9606-9C-2
Fabric D: Blue Words	1/4 yard of TK-9605-9C-2
Fabric E: Brown Words	1/4 yard of TK-9605-9C-1
Fabric F: Character & Words	7/8 yard of TK-9603-9C-1
Fabric G: Teal Stars	5/8 yard of TK-9598-9C-4
Fabric H: Light Blue Stars	1/4 yard of TK-9598-9C-1
Fabric I: Navy Stars	1 yard of TK-9598-9C-3
Fabric J: Yellow Gate Scroll	1/4 yard of TK-9012-9C-5
Fabric K: Tan Gate Scroll	1/3 yard of TK-9012-9C-9
Fabric L: Tinkerbell	1/4 yard of TK-9607-9C-1
Backing	3 yards of your choice

- Fussy cut one large panel 12-1/2" x 17-1/2"
- Fussy cut four small panels 8-1/2" x 10-1/2"
- Cut twenty-two 2-7/8" squares
- Cut twenty-two 2-7/8" squares
- Cut twenty-six 2-7/8" squares
- Cut eighteen 2-7/8" squares
- Cut two 6" x 28-1/2" strips for the side borders from the Length of Fabric (LOF). Cut two 4" x 24-1/2" strips from the Width of Fabric (WOF) for the top and bottom borders.
- Cut twenty-two 2-7/8" squares
- Cut six 2" x WOF strips. Piece the strips together to make two 2" x 46-1/2" and two 2" x 49-1/2" strips.
- Cut twenty-two 2-7/8" squares
- Cut two 2" x 18-1/2" strips, two 1-1/2" x 16-1/2" strips, eight 1" x 10-1/2" strips, two 1" x 28-1/2" strips and six 1" x 24-1/2" strips for the sashing. Cut six 1" x WOF strips. Piece the strips together to make four 1" x 46-1/2" strips for sashing.
- Cut five 2-1/2" x WOF strips for the binding
- Cut two 1" x 13-1/2" and two 1" x 17-1/2" strips
- Cut sixteen 2-1/2" square
- Cut forty-four 2-7/8" squares
- Fussy cut four 4-1/2" Tinkerbell squares.
- Cut two 54" x WOF strips. Piece them together to make one 54" x 54" backing.

## Assembly Instructions:

- 1) Sew one 1" x 17-1/2" Fabric J strip to each side of the large panel. Sew one 1" x 13-1/2" Fabric J strip to the top and bottom of the panel. Sew one 2" x 18-1/2" Fabric I strip to each side of the large panel. Sew one 1-1/2" x 16-1/2" Fabric I to the top and bottom of the large panel to make the center panel.

*NOTE: For the following half-square triangles, place each pair of squares right sides together with the directional print on top. Fold back one diagonal half of the directional fabric to check the finished layout of the half-square triangle before the squares are sewn together. Refer to the quilt photo for the pinwheel block layouts. Test each fabric combination before sewing all the squares in each combo together to make sure you have the directional print correct for the pinwheel blocks. The directional fabric will either be upright or turned sideways to the left for each group.*

- 2) Place one 2-7/8" Fabric K square on top of one 2-7/8" Fabric G square, right side together with the directional print running sideways (turned to the left). Draw a line across the diagonal of the top square (Fig. 1). Sew 1/4" away from each side of the drawn diagonal line (Fig. 1). Cut the two squares apart on the drawn diagonal line (Fig. 2) to make two half-square triangles (Fig. 3).
- 3) Repeat Step 2 to make eighteen half-square triangles of the following combos; G/K, H/K, B/E and C/E half-square triangles. Repeat Step 2 to make twenty-six of each combo; B/K, C/K, G/D and H/D half-square triangles.
- 4) Refer to the quilt photo to take two G/K half-square triangles and two H/K half-square triangles and sew them together to make one Pinwheel block. Repeat to make nine G/K/H pinwheel blocks.
- 5) Repeat Step 4 to make nine B/E/C pinwheels, thirteen B/K/C pinwheels and thirteen G/D/H pinwheels.
- 6) Refer to the quilt photo for block placement and sew together the five G/K/H pinwheels and five B/E/C pinwheels into two rows of five blocks for the first side borders. Sew the side borders to the center panel. Sew two rows of four blocks for the first top and bottom borders. Sew one 4-1/2" Fabric L square to each end of the top and bottom borders. Sew the borders to the center panel.
- 7) Sew one 1" x 24-1/2" Fabric I strip to the top and bottom of the center panel. Sew one 4" x 24-1/2" Fabric F strip to the top and bottom of the center panel. Sew another 1" x 24-1/2" Fabric I strip to the top and bottom of the center panel.
- 8) Refer to the quilt photo and sew together six G/D/H pinwheels and six B/K/C pinwheels into two rows of six blocks. Sew each pieced row to the top and bottom of the Center Panel. Sew one more 1" x 24-1/2" Fabric I strip to the top and bottom to complete the center section.
- 9) Place one 2-1/2" Fabric J square to the top left corner of one 8-1/2" x 10-1/2" Fabric A panel, right sides together (fig. 4). Sew across the diagonal of the smaller square from the upper right corner to the lower left corner (fig. 4). Flip open the triangle formed and press (fig. 5). Trim away the excess fabric 1/4" from behind the triangle 1/4" away from the sewn seam. Repeat with three more 2-1/2" Fabric J squares and the remaining three corners to complete the small panel. Repeat with the remaining three 8-1/2" x 10-1/2" Fabric A panels and 2-1/2" Fabric J squares. Sew one 1" x 10-1/2" Fabric I strip to the top and bottom of each panel to complete the four corner blocks.
- 10) Refer to the quilt photo for placement and sew together seven B/K/C pinwheel blocks and seven G/D/H pinwheel blocks into two rows of seven blocks. To make the left border, sew one 1" x 28-1/2" Fabric I strip to the right side of one pinwheel border. Sew one 6" x 28-1/2" Fabric F strip to the right side of the Fabric I strip. Refer to the quilt photo and sew one corner block to the top and bottom of the left pieced border. To make the right border, sew one 1" x 28-1/2" Fabric I strip to the left side of the other pinwheel border. Sew one 6" x 28-1/2" Fabric F strip to the left side of the Fabric I strip. Refer to the quilt photo and sew one corner block to the top and bottom of the right pieced border.
- 11) Sew one 1" x 46-1/2" Fabric I strip to each side of the two completed side borders. Sew the borders to the center panel to complete the quilt top.
- 12) Sew one 2" x 46-1/2" Fabric G strip to each side of the quilt top. Sew one 2" x 49-1/2" Fabric G strip to the top and bottom of the quilt top.
- 13) Layer, quilt and bind as desired.



FIG. 1

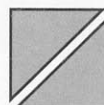


FIG. 2

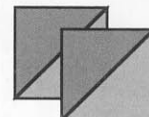


FIG. 3

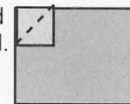


FIG. 4

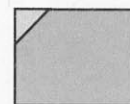


FIG. 5